

5x1 Presentation Switcher with HDBaseT 3.0 70m out SV-PSB51H70

4K/60 UHD (4:4:4) | HDCP 2.2 Compatible

The Solvision SV-PS51H70 5x1 seamless presentation switch features 3 HDMI inputs, 2 USB-C inputs (DP Alt mode, USB 2.0, 100M Ethernet and 60W charging), 1 HDMI output and 1 HDBT mirrored output. HDBT supports standard PoE power supply, and can extend uncompressed signal up to a distance of 230ft/70m (4K@30Hz 4:4:4) or 131ft/40m (4K@60Hz 4:4:4) via a single CAT6A (F/FTP) cable. This 5x1 seamless presentation switch output supports single full screen or various multiview display modes Single/PIP/PBP/Triple/Quad). This product supports USB 2.0 local KVM switching and local Hub/HDBT USB pass-through function (from TX to RX). It also supports bi-directional RS-232 and IR control signal pass-through function. This presentation switch is featured with 1 analog audio input, 1 analog audio output, and Dante 2x2 audio input and output. It built-in 3x3 audio matrix with independent audio EQ/ volume/delay adjustment.



Features

- HDMI 2.0b, HDCP 2.2 and DP 1.2 compliant
 - Support 18Gbps video bandwidth
 - Support video resolution up to 4K@60Hz 4:4:4
 - Uncompressed 4K60 over HDBT 3.0 up to 132ft/40m via single CAT6A (F/FTP) cable
 - Uncompressed 1080P&4K30 over HDBT 3.0 up to 230ft/70m via single CAT6A (F/FTP)
 - cable
 - Up to 5 categories of multiview display modes: Single/PIP/PBP/Triple/Quad
 - Support 5x1 seamless switching (single screen) and fast switching (multiview) function
 - Input: 2x USB-C, 3x HDMI, 1x Analog audio, 1x Dante 2ch
 - Output: 1x HDMI and 1x HDBT mirrored, 1x Analog audio, 1x Dante 2ch
 - HDMI and HDBaseT (PoE) outputs (Mirrored)
 - Dante 2x2 audio input and output
 - USB-C supports DisplayPort Alt mode for A/V, USB 2.0, 100M Ethernet and 60W charging
 - Local USB 2.0 KVM switching and extending USB 2.0 over HDBT 3.0
 - Signal input supports manual switching and automatic switching modes
 - Support analog/Dante audio embedding, analog/Dante audio de-embedding output
 - CEC/RS-232 control external devices ON/OFF
 - Advanced EDID management
 - Flexible control via front panel buttons, IR remote, RS-232, TCP/IP or Web GUI
 - Support standard PoE power supply (TX_PSE, RX_PD)
- Safety:-CE,FCC,RoHS,(ISO9001:2015,14001:2015,45001:2018, 27001:2022 -IAF Certified)



Specifications

Technical	
HDMI Compliance	HDMI 2.0b
HDCP Compliance	HDCP 2.2
DP Version	DP 1.2
Video Bandwidth	18Gbps
USB Bandwidth	TX USB DEVICES to TX HOST/USB-C: 480Mbps RX USB DEVICES to TX HOST/USB-C: 350Mbps RX USB DEVICES to RX HOST: 480Mbps
Network Bandwidth (LAN and USB-C Connection)	100Mbps
Input Video Resolution	480i ~1080p50/60Hz, 4Kx2K@24/30Hz, 4K2K@50Hz/ 60Hz 4:4:4
Output Video Resolution	Auto, 3840x2160p60, 3840x2160p50, 4096x2160p60, 4096x2160p50, 3840x2160p30, 3840x2160p25, 1920x1200p60RB, 1920x1080p60, 1920x1080p50, 1360x768p60, 1280x800p60, 1280x720p60, 1280x720p50, 1024x768p60
IR Level	12Vp-p
IR Frequency	Wideband 20K-60KHz
Color Space	Input: 8/10/12-bit, 8-bit (4K60Hz 4:4:4) Output: 8-bit
Color Depth	RGB, YCbCr 4:4:4 / 4:2:2, YUV 4:2:0
Audio Formats	LPCM 2.0
Audio Sample Rate	48KHz
Transmission Distance	1080P&4K30 -- 230ft/70m; 4K60 -- 131ft/40m
HDR	Input supports HDR, output does not support HDR.
ESD Protection	Human-body Model: ±8kV (Air-gap discharge) , ±4kV (Contact discharge)
TX Analog Audio	
Input Impedance	10K Ohms
Output Impedance	330 Ohms
Line Input Level (Maximum)	8.2dBu (2Vrms) @ balanced or unbalanced audio
Line Output Level (Maximum)	8.2dBu (2Vrms) @ balanced audio 2.2dBu (1Vrms) @ unbalanced audio
Frequency Response	(+0.5 dB, -1 dB) 20 Hz to 20 kHz
Audio Output Sync Delay	0 to 50ms
Audio S/N Ratio	93dB @ 2Vrms, 1kHz A-weighted
Audio THD+N	<0.1% @ 0dBV, 1kHz

SOLVISION TECHNOLOGY

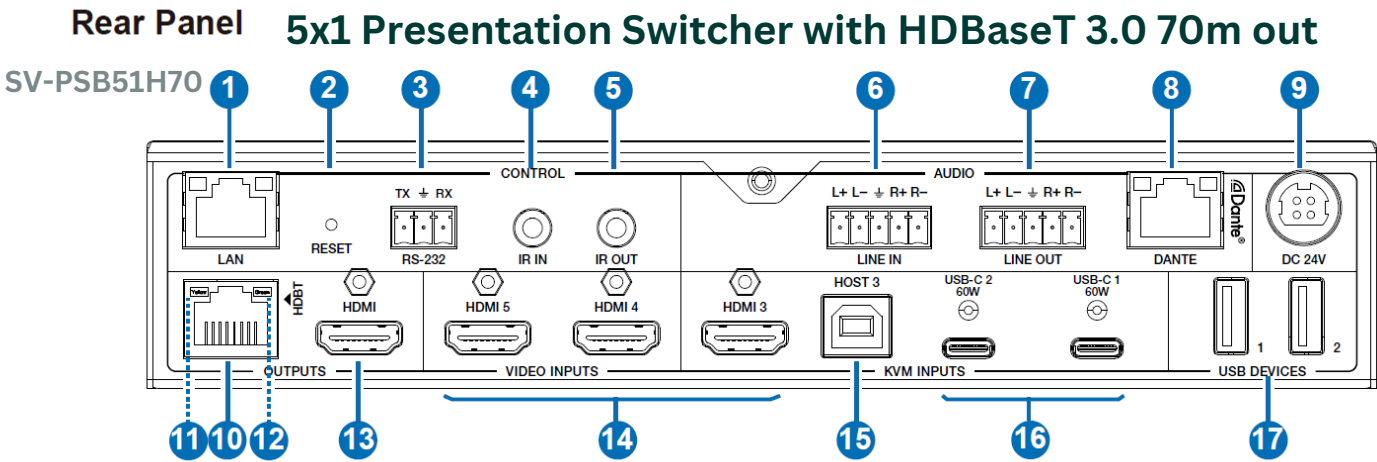
27 Elder Road, Working
Surrey GU24 9HB UK
info@solvisionav.com

9 A, Blackwood Avenue,
Mentone, VIC- 3194
salesaustralia@solvisionav.com

629 Redstone Drive NE,
Calgary AB, T3N, 1KB Alberta
salescanada@solvisionav.com

SOLVISION INDIA

357-B, Udyog Vihar Phase 6, SECTOR
37, Pace City II Gurugram Haryana-
122001 -
salesindia@solvisionav.in



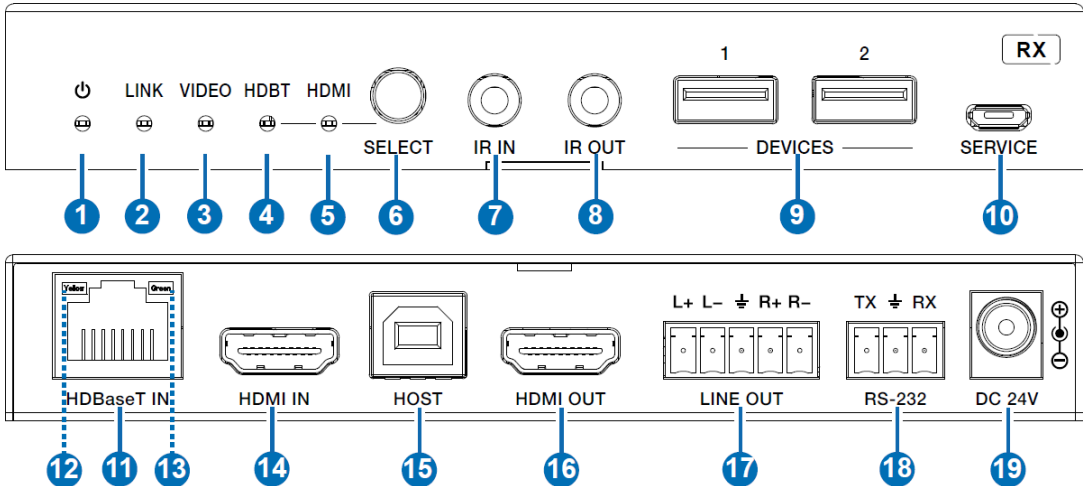
No.	Name	Function Description
1	LAN port	Connect to a router or Switch for USB-C Internet access or Web GUI control.
2	RESET	Press and hold this button for 5 seconds to restore to factory default settings.
3	RS-232 port	RS-232 serial port, used for RS-232 signal pass-through or controlling this product via RS-232 commands.
4	IR IN port	Connect the IR receiver cable, used for IR signal pass-through or controlling this product via the IR remote.
5	IR OUT port	Connect the IR blaster cable, the IR signal is from the IR IN port of the HDBaseT Receiver.
6	LINE IN port	Analog audio input port, supporting balanced/unbalanced audio input, with a maximum support of 2Vrms.Balanced connection method: L+, L-, R+, R- Unbalanced connection method: L+, R+
7	LINE OUT	Analog audio output port, supporting balanced audio output
8	DANTE port	Switch with other Dante receivers
9	DC 24V port	Connected to the DC 24V power adapter.
10	HDBT OUTPUT	HDBaseT IN port of the receiver with a CAT6A (F/FTP) cable
11	Data Signal Indicator (Yellow)	Light on: HDMI signal input with HDCP. Light flashing: HDMI signal input without HDCP. Light off: No HDMI signal input.
12	Link Signal Indicator (Green)	Light on: Transmitter and Receiver are in good connection status. Light flashing: Transmitter and Receiver are in poor connection status. Light off: The Transmitter and Receiver are not connected.
13	HDMI OUTPUT	HDMI display device such as TV or monitor with HDMI cable.
14	HDMI IN PUT	HDMI 3/4/5 VIDEO INPUTS
15	HOST 3 port	USB Host port, connected to PC.
16	USB-C 1/2	USB-C signal source device, with the function of 60W charging
17	USB DEVICES	Two USB extension ports, connected to mouse, keyboard, USB camera or other USB devices



SV-PSB51H70

5x1 Presentation Switcher with HDBaseT 3.0 70m out

Receiver Panel

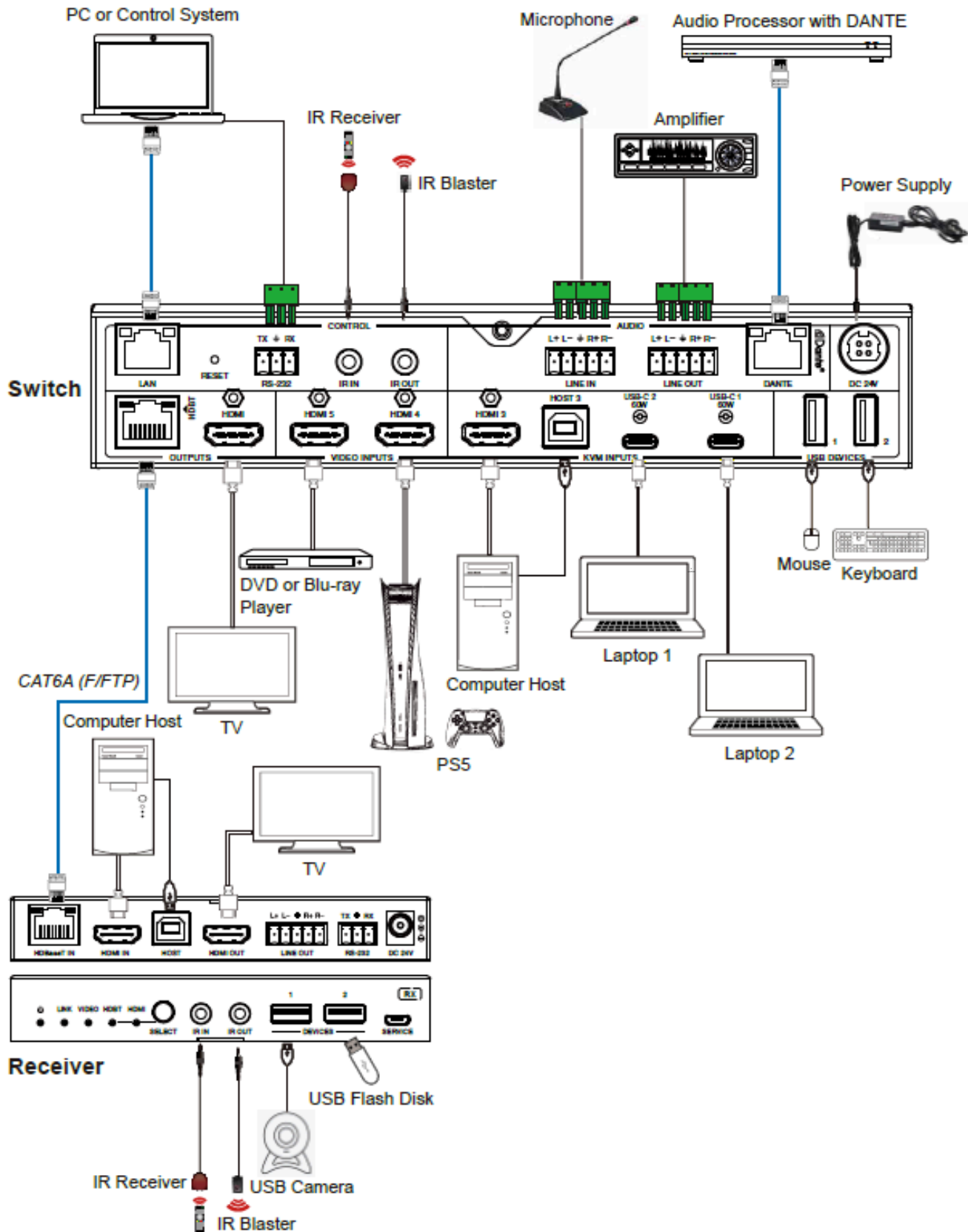


No.	Name	Function Description
1	Power LED	When the receiver is powered on, the red power LED will be on.
2	LINK LED	Light on: Transmitter and Receiver are in good connection status. Light flashing: Transmitter and Receiver are in poor connection status. Light off: The Transmitter and Receiver are not connected.
3	VIDEO LED	Light on: HDMI signal input with HDCP. Light flashing: HDMI signal input without HDCP, Light off: No HDMI signal input.
4	HDBT LED	When the HDBaseT IN port is selected as the signal input channel, the green HDBT LED will be on.
5	HDMI LED	When the HDMI IN port is selected as the signal input channel,the green HDMI LED will be on.
6	SELECT button	Press this button to select signal input channel.
7	IR IN port	Connect the IR receiver cable, the IR signal will be sent to the IR OUT port of the transmitter.
8	IR OUT port	Connect the IR blaster cable, the IR signal is from the IR IN port of the transmitter.
9	DEVICES ports	Two USB extension ports, connected to whiteboard, mouse, keyboard, USB camera or other USB
10	SERVICE port	Firmware update port.
11	HDBaseT IN	HDBaseT input port, connected to the HDBT OUTPUT port of the transmitter with a CAT6A (F/FTP)
12	Data Signal Indicator (Yellow)	Light on: HDMI signal input with HDCP.Light flashing: HDMI signal input without HDCP. Light off: No HDMI signal input.
13	Link Signal Indicator (Green)	Light on: Transmitter and Receiver are in good connection status. Light flashing: Transmitter and Receiver are in poor connection status. Light off: The Transmitter and Receiver are not connected.
14	HDMI IN port	HDMI signal input port, connected to HDMI source device such as DVD or Blu-ray player with HDMI
15	HOST port	USB Host port, connected to PC.
16	HDMI OUT port	HDMI signal output port, connected to HDMI display device such as TV or monitor with HDMI cable.
17	LINE OUT port	Analogue audio output port, supporting balanced audio output
18	RS-232	RS-232 serial port, used for RS-232 signal pass-through or controlling this receiver via RS-232
19	DC 24V	Power port, connected to the DC 24V power adapter. Note: The receiver can also be powered by POE (through the HDBaseT IN port).

SV-PSB51H70

5x1 Presentation Switcher with HDBaseT 3.0 70m out

Connection Diagram



SOLVISION TECHNOLOGY

27 Elder Road, Working
Surrey GU24 9HB UK
info@solvisionav.com

9 A, Blackwood Avenue,
Mentone, VIC- 3194
salesaustralia@solvisionav.com

629 Redstone Drive NE,
Calgary AB, T3N, 1KB Alberta
salescanada@solvisionav.com

SOLVISION INDIA

357-B, Udyog Vihar Phase 6, SECTOR
37, Pace City II Gurugram Haryana-
122001 -
salesindia@solvisionav.in